

## TOBACCO-FREE CAMPUS SINCE 2009

Smoking or use of any tobacco product is not permitted in any facility or on the grounds of any University of Kentucky property located in Fayette County.

### WHY WE DECIDED TO GO TOBACCO-FREE

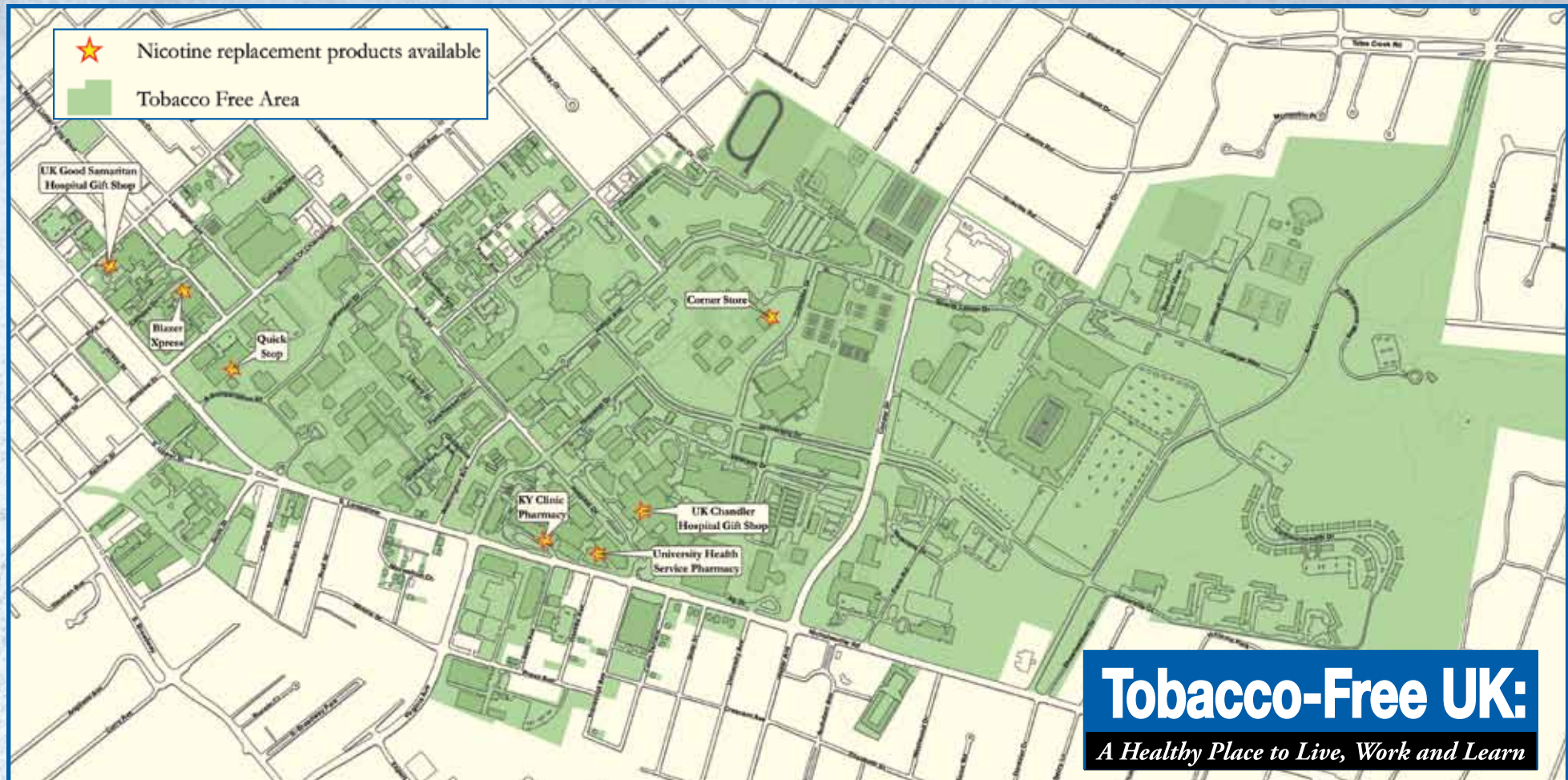
UK has a vital interest in maintaining a safe and healthy environment. With over \$1 billion per year spent on treating people who get sick from using tobacco products in Kentucky alone, the use of tobacco products and exposure to secondhand smoke constitutes a significant health hazard, leading to premature death and chronic, debilitating disease. This policy puts students, patients, employees, and visitors first by providing a healthy, tobacco-free environment and decreasing exposure to secondhand smoke.

### CREATING AN ENVIRONMENT OF COMPLIANCE

The policy applies to all employees, students, patients, visitors, vendors, and contractors. Violation of the tobacco-free regulation may result in corrective action under the UK Student Code of Conduct, Human Resources Policies and Procedures, other applicable University Regulations or Policies, and third-party contracts. Visitors refusing to comply may be asked to leave campus.

Find out more information about UK's Tobacco-Free policy and available resources:

[www.uky.edu/tobaccofree](http://www.uky.edu/tobaccofree)



**Tobacco-Free UK:**

*A Healthy Place to Live, Work and Learn*

This policy covers all University-controlled streets and sidewalks. For those sidewalks adjacent to streets not controlled by the University, we ask you to respect the pedestrians and our efforts to provide a healthier environment by refraining from tobacco use on those sidewalks.

The map above outlines the boundaries covered by the tobacco-free policy at UK. Clearly visible signage is also in place to indicate tobacco-free boundaries.



### UK TOBACCO-FREE POLICY, ADMINISTRATION REGULATION 6:5

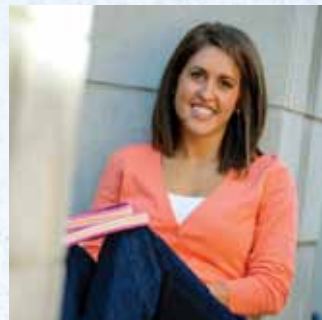
For areas located within Fayette County, Kentucky, the use of all tobacco products is prohibited on all property that is owned, operated, leased, occupied, or controlled by the University. ...“Property” for purposes of this paragraph includes buildings and structures, grounds, parking structures, enclosed bridges and walkways, sidewalks, parking lots, and vehicles, as well as personal vehicles in these areas.

## ABOUT THE POLICY

The University of Kentucky became completely tobacco-free on all campus grounds and parking areas and all other UK properties in Fayette County on November 19, 2009, coinciding with the American Cancer Society's Great American Smokeout, held annually on the third Thursday in November. The tobacco-free policy, which prohibits the use of all tobacco products (including but not limited to cigarettes, pipes, hookah, cigars, e-cigarettes, chew, snuff, snus, and other non-combustible tobacco products), has been in effect on the UK Medical Center campus and all UK HealthCare facilities within Fayette County since November 20, 2008, and applies to all areas of the UK campus and property in Fayette County, indoors and out.



Additional information about UK's tobacco-free campus is available at [www.uky.edu/tobaccofree](http://www.uky.edu/tobaccofree).



## AMERICA'S TOBACCO-FREE CAMPUSES

As of September 2010, the American Lung Association reports that there are 446 colleges and universities with tobacco-free or smoke-free policies for the entire campus, indoors and out.

# Tobacco-Free UK:

*A Healthy Place to Live, Work and Learn*

## FOR MORE INFORMATION

Brochures outlining the resources on how to quit and providing suggestions for managing your symptoms are available at University Health Service (students) or UK HealthCare Tobacco Treatment Service (employees and others). Products to help you manage your symptoms, such as nicotine replacement gum or patches may be purchased to assist you while you are visiting, working, or attending class. They are available at the following locations:

### Kentucky Clinic Pharmacy

740 S. Limestone, J-134 Kentucky Clinic – on the first floor of the Kentucky Clinic facility at the Limestone entrance

### University Health Service Pharmacy

830 S. Limestone– on the first floor of the University Health Service Building (across the street from Speedway)

### UK Chandler Hospital Gift Shop

800 Rose Street – First floor off the main lobby

### UK Good Samaritan Hospital Gift Shop

310 S. Limestone– lower level

### UK Convenience Stores:

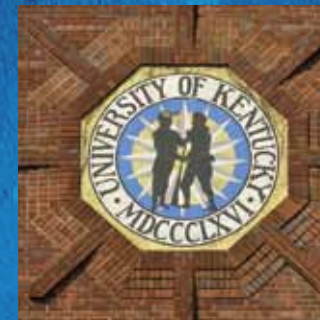
**Blazer Xpress** – Located on North Campus next to Blazer Café on the corner of Martin Luther King and Keeneland Drive

**Corner Store** – Located on South Campus next to Commons Market in the Kirwan/Blanding Complex

**Quick Stop** – Located in the Student Center just inside the bridge entrance across from Starbucks®

### K-Lair Grill

Located next to Parking Structure #2 on Hilltop Avenue



Welcome to our  
**Tobacco-Free Campus:**  
A Healthy Place to Live,  
Work and Learn

# UK

UNIVERSITY OF  
KENTUCKY®